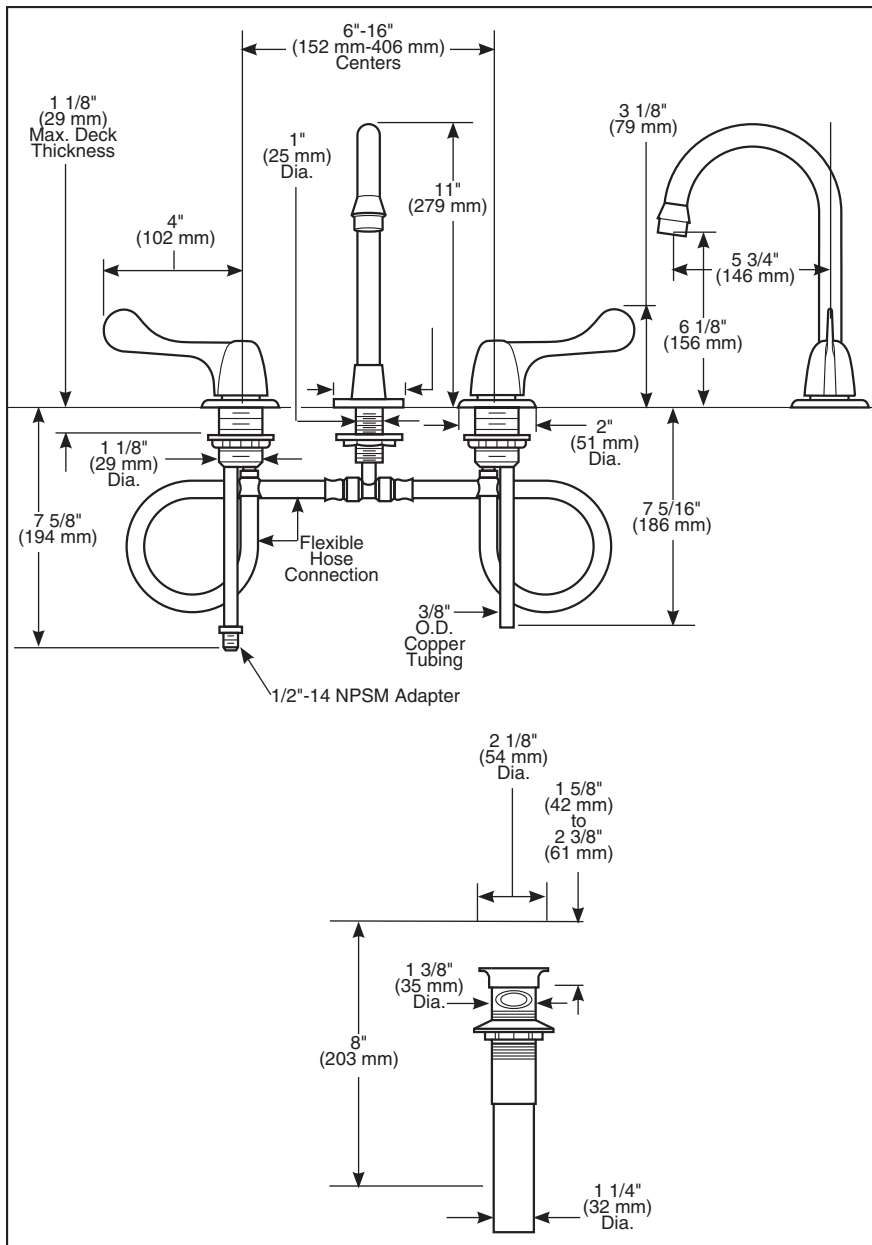


Submitted Model No.: _____

Specific Features: _____



- Two Handle
- Widespread
- Three Hole Sink Applications
- 6"-16" (152 mm-406 mm) Centers

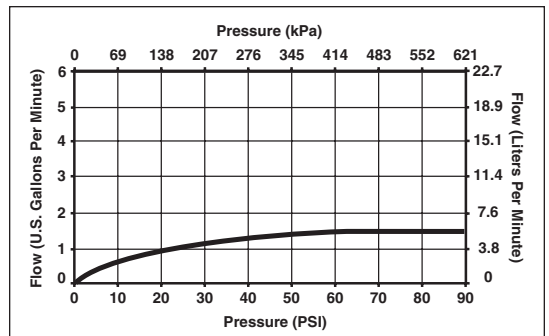
STANDARD SPECIFICATIONS:

- Two handle lavatory faucets for concealed mounting on three hole sinks.
- Solid brass fabricated end valves and spout body.
- Widespread 6"-16" (152 mm-406 mm) centers.
- 5 3/4" (146 mm) long, 11" (279 mm) high rigid gooseneck spout.
- Metal wrist blade handles. Vandal resistant red/blue screws indicate hot/cold temperature.
- Control mechanism shall be of the rotating cylinder type with stainless steel plate and 1/4 turn stops. Replaceable non-metallic seats operate in stainless steel lined sockets.
- Hot and cold stems are interchangeable.
- 1.5 gpm (5.7 L/min) outlet.
- 3/8" O.D. copper supply tube inlets with 1/2"-14 NPSM adapters.
- Metal grid strainer (3579-WFHDF).
- Available Options for Field Conversion:
 - Vandal resistant aerator with wrench - 2.2 gpm (8.3L/min). Chrome plated. Order RP246.
 - Vandal resistant laminar flow spray outlet with wrench - 2.2 gpm (8.3L/min). Chrome plated. Order RP21966.
 - Vandal resistant spray outlet with wrench - .5 gpm (1.9L/min). Chrome plated. Order RP31704.



COMPLIES WITH:

- ASME A112.18.1
- CSA B125
- Indicates ADA compliance to CABO/ANSI A117.1
- CSA Certified



Delta reserves the right (1) to make changes in specifications and materials, and (2) to change or discontinue models, both without notice or obligation. Dimensions are for reference only. See current fullline price book or www.specselect.com for finish options and product availability.